

Microsoft Dynamics NAV 2015

What's new?

A business solution from Microsoft—that is quick to implement, easy to use, and has the power to support SMB ambition

Quick to implement

- RapidStart upgrade—code
- RapidStart upgrade—data
- RapidStart implementation

Easy to use

- Tablet experience
- User experience enhancements
- Simplification
- Office 365 integration
- Document reporting

Power to support

- Cash management
- Microsoft social listening

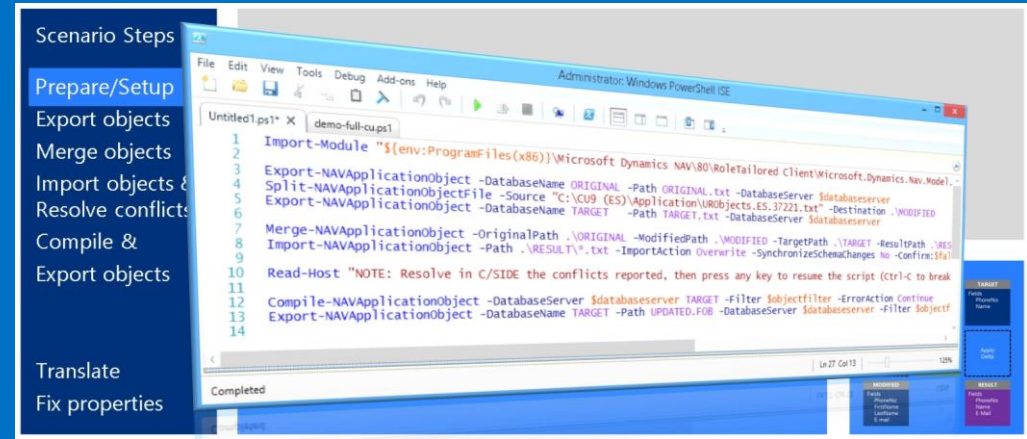


What's new in Microsoft Dynamics NAV 2015?

RapidStart upgrade—code

Microsoft Dynamics NAV 2015 includes several enhancements for upgrading solutions.

New application merge utilities help partners upgrade their solution—application code and metadata—from one version to another, or from one cumulative update to another. We also introduce supporting tools for handling application object files in general, and for managing application languages and captions.



Supporting documentation

WHY Use Application Merge Utilities in Microsoft Dynamics NAV 2015

WHAT Is Application Merge Utilities and How to Handle Captions and Languages in NAV 2015

WHAT Is Application Merge Utilities in Microsoft Dynamics NAV 2015

WHAT Is Exporting and Importing Data Using Microsoft Dynamics NAV 2015

WHAT is Merge Application Object Source Files in Microsoft Dynamics NAV

HOW DO I Get Started with Application Merge Utilities in Microsoft Dynamics NAV 2015

HOW DO I Use Schema Synchronization in Microsoft Dynamics NAV 2015

HOW DO I Handle Captions and Translation Files Using Application Merge Utilities in Microsoft Dynamics NAV 2015

HOW DO I Update Microsoft Dynamics NAV Application Objects Using Application Merge Utilities in Microsoft Dynamics NAV 2015

HOW DO I Compile Using the Development Shell in Microsoft Dynamics NAV 2015

HOW DO I Merge Version List Using the Application Merge Utilities in Microsoft Dynamics NAV 2015

HOW DO I Handle Application Object Properties Using Application Merge Utilities in Microsoft Dynamics NAV 2015

HOW DO I Handle Documentation Trigger Conflicts Using Application Merge Utilities in Microsoft Dynamics NAV 2015

HOW DO I Compare Microsoft Dynamics NAV Application Objects Using Application Merge Utilities in Microsoft Dynamics NAV 2015

What's new in Microsoft Dynamics NAV 2015?

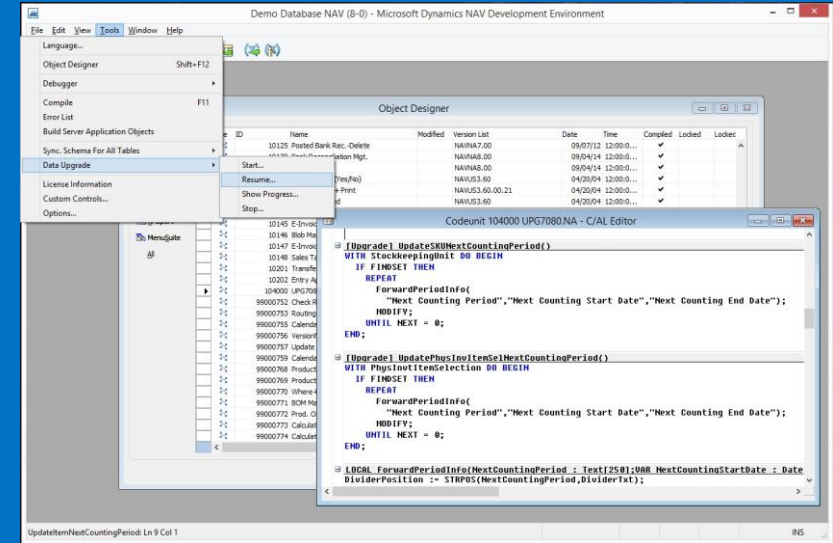
RapidStart upgrade—data

Microsoft Dynamics NAV 2015 includes several enhancements for upgrading solutions. The data upgrade was enhanced significantly to optimize the performance and provide developers with a more convenient way of defining, automating, troubleshooting and running of the data upgrade logic.

With schema synchronization on demand, the data upgrade becomes a much more convenient and flexible process. The development environment and the list of PowerShell cmdlets have been extended, so that you can easily get the full list of changes which require data upgrade instructions, choose how and when to sync table changes and instruct the Microsoft Dynamics NAV server how to handle data in the changed tables when performing the sync.

You can run the data upgrade functions for all companies at once, in parallel or in sequence; catch all the errors in one go, instead of having to re-run the entire process several times; resume after an error is detected and fixed; get a detailed overview of the progress of the data upgrade.

Windows PowerShell example scripts included with the new release can help you automate the entire data upgrade process end-to-end.



Supporting documentation



WHAT Is Data Upgrade in Microsoft Dynamics NAV 2015



HOW TO - DEMO: Data Upgrade in Microsoft Dynamics NAV 2015



HOW DO I Prepare and Run Upgrade Toolkit Step 1



HOW DO I Work with Schema Synchronization in Microsoft Dynamics NAV 2015



WHAT Is Schema Synchronization in Microsoft Dynamics NAV 2015



HOW DO I Prepare and Run Upgrade Toolkit Step 2

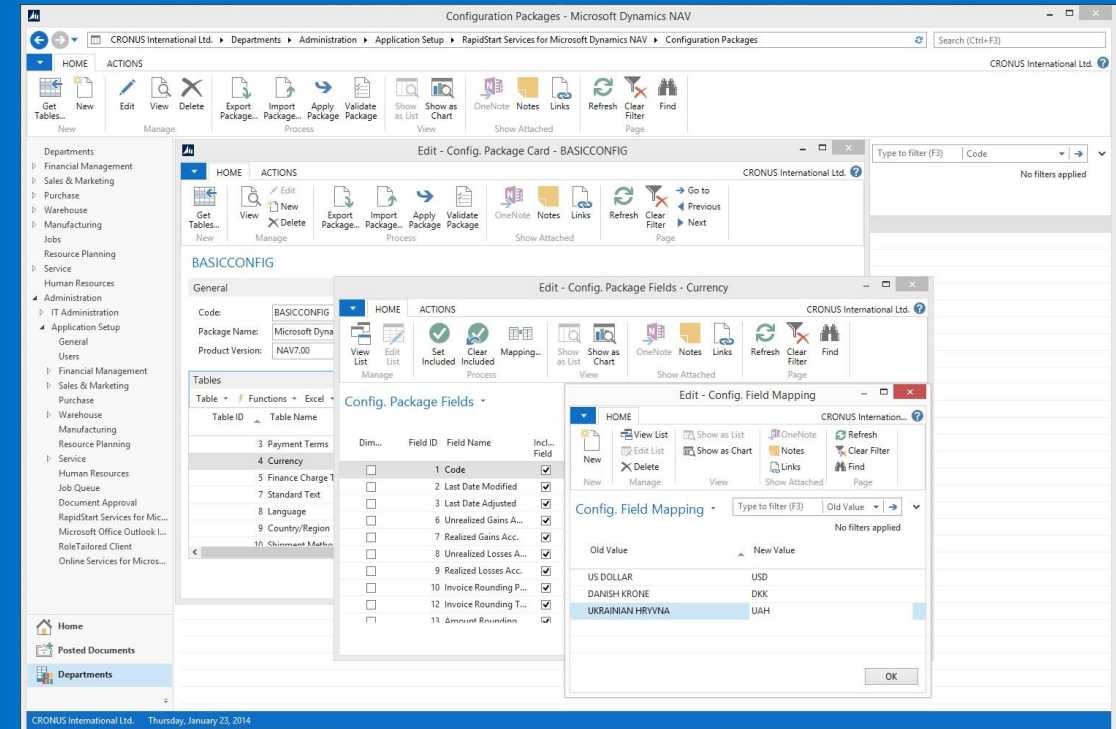
What's new in Microsoft Dynamics NAV 2015?

RapidStart implementation

RapidStart Services helps meet the needs of Microsoft partners responsible for creating, setting up, and initializing new installations of Microsoft Dynamics NAV.

This release offers the possibility to map values from an existing ERP system into your Microsoft Dynamics NAV implementation during the migration of your customer's data.

In addition, tool support is provided to help you clean up and process the data that you want to import. For example, you can easily convert dates and decimals to the format required by the regional settings on a user's computer.



Supporting documentation



HOW DO I Import Data from External Sources into Microsoft Dynamics NAV 2015 Using RapidStart Implementation

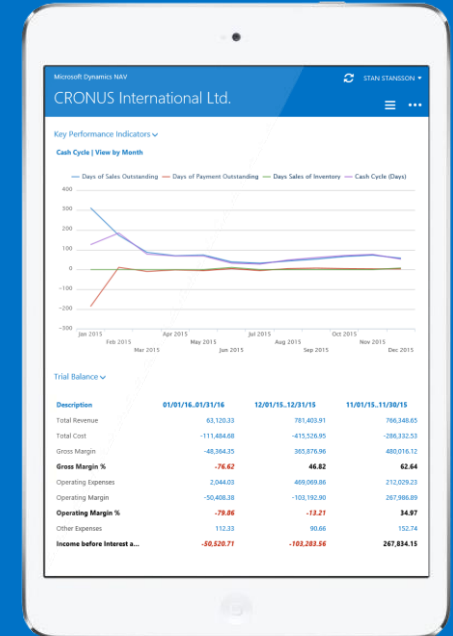
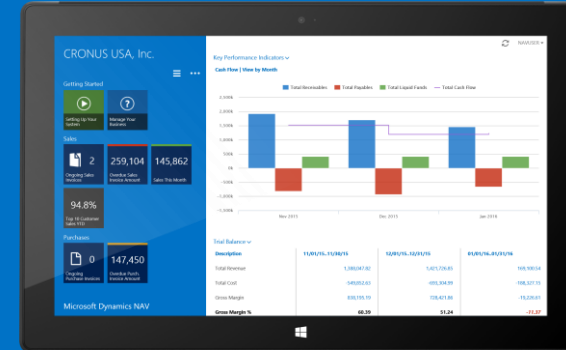
What's new in Microsoft Dynamics NAV 2015?

Microsoft Dynamics NAV for tablets

Dynamics NAV for tablets allows users in small and mid-sized businesses to get access to the data they need from the device they prefer. With a fresh and modern interface designed exclusively for touch, it provides the familiar RoleTailored experience so that users can get real work done at home, at work or on the go.

Dynamics NAV for tablets leverages the complete Microsoft Dynamics NAV architecture and investments you've already made. Customizing and role-tailoring your customer's tablet experience becomes a simple task, using the Microsoft Dynamics NAV Development Environment and the tablet client running in the browser.

Download and install the app today from the Windows Store, App Store, or Google Play and connect to your Dynamics NAV 2015 Server.



Supporting documentation

- WHY** Use Microsoft Dynamics NAV 2015 for Tablets
- WHAT** Is Tablet Design Insights in Microsoft Dynamics NAV 2015

- HOW DO I** Add Help to my Tablet Client in Microsoft Dynamics NAV
- HOW DO I** Create Application Pages for the Tablet Client in Microsoft Dynamics NAV 2015

- HOW DO I** Get Started with Developing for Microsoft Dynamics NAV Tablet Client

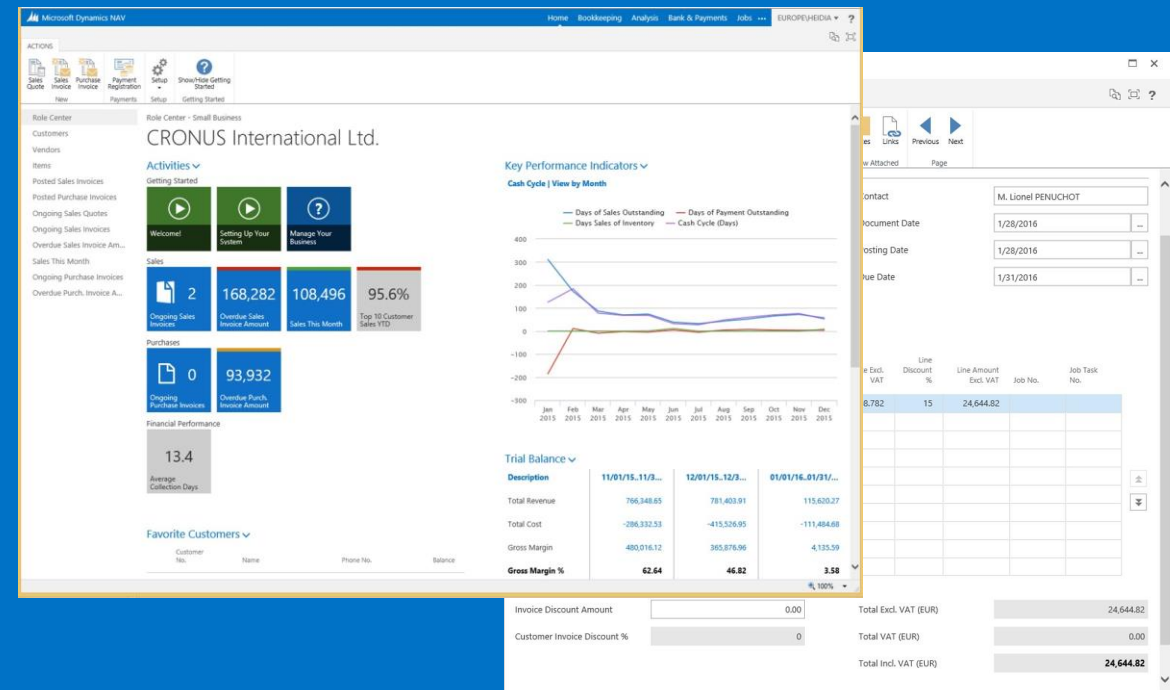
- HOW DO I** All you Need to Know About Developing for Microsoft Dynamics NAV for Tablets in 90 Seconds

What's new in Microsoft Dynamics NAV 2015?

User experience enhancements

Making Microsoft Dynamics NAV more intuitive for the end-user by making data entry on pages faster by showing mandatory input fields (Mandatory Fields). Faster processing by automatically filling in document numbers (Auto-fill No. field). Easier review of documents such as orders, invoices, and credit memos by having totals shown on the page (Total section on document pages). Increased productivity by only showing what is relevant to the user, depending on users permission sets and license (UI Elements Removal).

To present striking operational BI dashboards, that improves decision making and focused actions the Role Center now can show special cue tiles that apply custom formatting to any computed numerical value. It can also show an indicator that changes color based on the data values that the tile reflects (Enhanced Cues).



Supporting documentation



WHY Use Enhanced Cues?



WHAT Is the Enhanced Cue Functionality



HOW TO - DEMO: Remove UI in Microsoft Dynamics NAV 2015



HOW TO - DEMO: Simplified UX—Basic Concepts in Microsoft Dynamics NAV 2015



HOW TO - DEMO: UI Elements Removal in Microsoft Dynamics NAV



COMING SOON
HOW TO - DEMO: Enhanced Cues



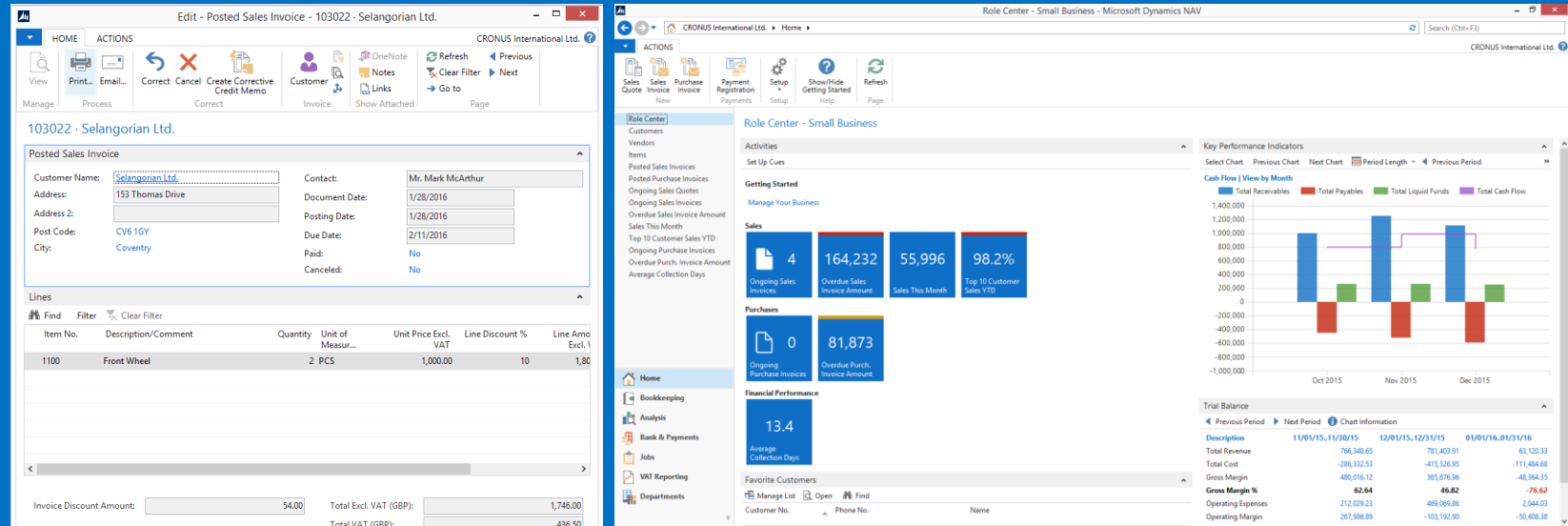
COMING SOON
HOW DO I Simplify UX—Basic Concepts in Microsoft Dynamics NAV 2015

What's new in Microsoft Dynamics NAV 2015?

Simplification

Simplification is a foundation for building solutions with a simpler user experience which focus on basic sales and purchase scenarios for small business solutions.

It consists of a set of ~100 objects, including 60+ pages that have been simplified plus one new Rolecenter for smaller businesses. The pages have been localized for each supported market. Simplified UX uses the standard NAV tables as the underlying tables.



Supporting documentation

- WHY** Use Simplified UX I in Microsoft Dynamics NAV 2015
- WHY** Use Simplified UX II in Microsoft Dynamics NAV 2015
- WHAT** Is Simplified UX in Microsoft Dynamics NAV 2015
- WHAT** Is Application Simplifications in Microsoft Dynamics NAV 2015
- HOW TO IMPLEMENT** a Solution using Simplified UX in Microsoft Dynamics NAV 2015

- HOW TO - DEMO:** Application Simplifications in Microsoft Dynamics NAV 2015
- HOW TO - DEMO:** Use Setup Pages in Microsoft Dynamics NAV 2015
- HOW TO - DEMO:** Refresh Parent UpdatePropagation in Microsoft Dynamics NAV 2015
- HOW TO - DEMO:** Create a Sales Invoice from a Sales Quote in Microsoft Dynamics NAV 2015

- HOW TO - DEMO:** The Basic Concept in Simplified UX in Microsoft Dynamics NAV 2015
- HOW TO - DEMO:** Create Purchase Invoices and Purchase Credit Memos in Microsoft Dynamics NAV 2015
- HOW TO - DEMO:** Create a Credit Memo for a Customer in Microsoft Dynamics NAV 2015

- HOW TO - DEMO:** Create Items and Customers from Templates in Microsoft Dynamics NAV 2015
- HOW TO - DEMO:** Set Key Performance Indicators in Microsoft Dynamics NAV 2015
- HOW TO - DEMO:** Set Sales Prices and Discounts for an Item in Microsoft Dynamics NAV 2015

What's new in Microsoft Dynamics NAV 2015?

Office 365 integration

Microsoft Dynamics NAV provides interoperability with Office 365, which enables customers to drill down, analyze, share, and collaborate with peers. And with new usability enhancements that make their solution easier and more familiar to use, customers will enjoy working seamlessly and effortlessly across all applications.

In Microsoft Dynamics NAV 2015 we continued investing in the integration with Office 365 by supporting:

- Simplified email messaging via SMTP including Office 365
- Sign in to the Microsoft Dynamics NAV Windows client using your Office 365 account

Supporting documentation

 **WHY** Use OAuth Support on Web Services in Microsoft Dynamics NAV 2015

 **WHAT** is OAuth on Web Service Endpoints in Microsoft Dynamics NAV 2015


 **HOW TO PERFORM** Simplified Email with a Report Attachment in Microsoft Dynamics NAV 2015

 **HOW TO USE** the Custom Profile Parameter in Microsoft Dynamics NAV 2015

 **COMING SOON**
HOW TO - DEMO: Quick Start—Single Sign-on in Microsoft Dynamics NAV

 **HOW TO - DEMO:** Refresh Parent with UpdatePropagation

 **HOW TO - DEMO:** Simplified Email with a Report Attachment in Microsoft Dynamics NAV 2015

 **COMING SOON**
HOW DO I Use PowerShell and Windows Azure Active Directory Allowing Single Sign-on for Windows Client

 **COMING SOON**
HOW DO I Refresh Parent with UpdatePropagation in Microsoft Dynamics NAV 2015

What's new in Microsoft Dynamics NAV 2015?

Document reporting

We are introducing Microsoft Word as a layout editing option for document reports.

A single report can now have many layouts, either RDLC, Word, or both.

In a scenario where you are running multiple customers in a multitenant setup you can have as many tenant-specific customizations as needed, stored in the business data database. End users can control which layout for a given report in a solution is the active one.

Report scheduling

You can schedule any report to run on the server, now or scheduled later. Reports will be bundled in an inbox in your Role Center.

CRONUS INTERNATIONAL LTD.
25 January 2015

INVOICE 103001

Qty	Item	Description	Unit Price	Discount	Line Total
25	TB02HY	Assembling Furniture, January	54.00	0	1,350.00
120	TB02HY	Assembling Furniture, January	54.00	0	6,480.00
		Subtotal			7,830.00
		Invoice Discount		-361.50	
		Total GBP Incl. VAT			7,468.50
		10% VAT			743.85
		Total GBP Incl. VAT			8,212.35

Thank you for your business!

© 2015 Cronus International Ltd.
5 The Ring, Westminster, W2 9HG London
p. 0200-000-0000

cronus
Invoice: 103001
25 January 2015

CRONUS International Ltd.
5 The Ring,
Westminster
W2 9HG London
Phone: 0200-000-0000

Bill To:
The Cronus Group PLC
M. Andy Tait
102 Market Square
Birmingham, B27 4ET
Great Britain

Ship To:
The Cronus Group PLC
M. Andy Tait
102 Market Square
Birmingham, B27 4ET
Great Britain

DATE: 25 January 2015

Sales Rep.	P.O. Number	Shipment Method	Payment Date	Payment Terms
Peter Sabinov		Ex Warehouse	25 February 2015	1 Month/2% 6 days

Quantity	Description	Unit Price	Total
25	Assembling Furniture, January	54.00	1,350.00
120	Assembling Furniture, January	54.00	6,480.00
	Subtotal		7,830.00
	Invoice Discount		-361.50
	Total GBP Incl. VAT		7,468.50
	10% VAT		743.85
	Total GBP		8,212.35

Thank you for your business!

Made all checks possible by CRONUS INTERNATIONAL LTD.
THANK YOU FOR YOUR BUSINESS!

Invoice 103001

CRONUS International Ltd.
5 The Ring, Westminster, W2 9HG London

DATE: 25 January 2015

To:
The Cronus Group PLC
M. Andy Tait
102 Market Square
Birmingham, B27 4ET
Great Britain

Ship To:
The Cronus Group PLC
M. Andy Tait
102 Market Square
Birmingham, B27 4ET
Great Britain

Quantity	Description	Unit Price	Total
25	Assembling Furniture, January	54.00	1,350.00
120	Assembling Furniture, January	54.00	6,480.00
	Subtotal		7,830.00
	Invoice Discount		-361.50
	Total GBP Incl. VAT		7,468.50
	10% VAT		743.85
	Total GBP Incl. VAT		8,212.35

Thank you for your business!

Supporting documentation

WHY to Use Word Document Reports in Microsoft Dynamics NAV 2015

HOW TO - DEMO: Creating Word Document Reports and Customizing Layouts

HOW TO - DEMO: Reporting Layout Refactoring

HOW TO - DEMO: Schedule Report Execution

HOW DO I Customize Word Layout in Microsoft Dynamics NAV 2015 – Simple Formatting

HOW DO I Customize Word Layout in Microsoft Dynamics NAV 2015 – Advanced Formatting

HOW DO I Create a New Word Report Based on an Existing Word Template in Microsoft Dynamics NAV 2015

HOW DO I Develop Word Layouts in the Development Environment in Microsoft Dynamics NAV 2015

HOW DO I Print Multiple Word Layouts Based Document Reports in One Output File

HOW DO I Manage Report Layouts in Microsoft Dynamics NAV 2015

HOW DO I Customize a Custom RDLC Report Layout in Microsoft Dynamics NAV 2015

What's new in Microsoft Dynamics NAV 2015?

Cash management

Microsoft Dynamics NAV 2015 delivers several cash management enhancements.

Bank integration—simple and uniform across borders

With the new Bank Data Conversion Service feature users get electronic bank statement files converted into data that can be imported into Microsoft Dynamics NAV. Reversely, users can also use the conversion service to export payment information to electronic payment files in the format that their bank requires. Microsoft Dynamics NAV 2015 supports electronic bank files of major banks in over 25 countries.

Incoming and outgoing bank payments – fast and reliable automatic registrations

The Payment Reconciliation Journals enables users to import bank transaction data into a dedicated UI and automatically apply to open entries representing customer and vendor documents. The features includes advanced record matching, strong review tools and the possibility to freely define the payment match tolerance and to modify the generic matching algorithm.

Create and manage electronic payment—more information and better control

Improvements in the Payment Journal and the Credit Transfer Registers enable users to better manage the payment creation and export process and to track the payment history. Users that do not want to post payments until they have actually been processed at the bank can more efficiently control which open vendor documents to pay and avoid paying vendors wrongly or paying duplicate amounts. This also makes partial-payment scenarios easy to manage.

Supporting documentation

 **WHY** Use Bank Data Conversion Service in Microsoft Dynamics NAV 2015

 **WHY** Use Cash Management in Microsoft Dynamics NAV 2015

 **WHY** Use Payment Process and Bank Reconciliation Using Bank Data Conversation Service

 **WHAT** is Record Matching in the Payment Reconciliation Journal

 **HOW TO - DEMO:** Create and Manage Electronic Payments

 **HOW TO - DEMO:** Recognize Incoming and Outgoing Bank Payments in the Payment Reconciliation Journal

 **HOW TO - DEMO:** Use the Bank Data Conversation Service to Export Payments and Import Bank Statements


 **HOW TO - DEMO:** Bank Data Conversion Service for Payment Export and Bank Statement Import

 **HOW TO - DEMO:** Handle Payments with Payment Discounts in the Payment Reconciliation Journal

 **HOW TO - DEMO:** Recognize Incoming FIK Payments (DK Version)

 **HOW TO - DEMO:** Create and Manage Electronic Payments

 **HOW TO - DEMO:** Manage Electronic Payments That Have Previously Been Exported

 **HOW DO I** Use the Bank Data Conversion Service to Export Payment Files and Import Bank Statement Files

 **HOW DO I** Reconcile Incoming and Outgoing Bank Payments in a Payment Reconciliation Journal

 **HOW DO I** Create and Manage Electronic Payments

What's new in Microsoft Dynamics NAV 2015?

Social listening

Your customers and stakeholders are talking about you somewhere on Facebook, Twitter, or blogs. How do you learn about it? Well, you can get powerful social insights by connecting Microsoft Dynamics CRM Online to Microsoft Social Listening. Microsoft Social Listening collects data from social media websites and presents it to you in easy-to-consume charts and graphs that you can use to spot emerging trends in people's comments, whether they're positive, negative, or neutral.

You can drill down into the data and see who is mentioning you, where they posted the comment, and exactly what they said. Armed with these insights, you can pinpoint what you're doing right, and address potential issues before bigger problems arise.

With one of the first cumulative updates, Microsoft Dynamics NAV 2015 will include a control add-in, which will enable you to embed cloud hosted services, like Microsoft Social Listening, into Microsoft Dynamics NAV pages.

Supporting documentation



COMING SOON

HOW TO INTEGRATE MSL into Microsoft Dynamics NAV 2015

Supporting materials

Why

'Why' documents provides more insights what the business value might be for you and your customers

What

'What' Documents explains the architectural design of added features

How

'How' materials provide you how to use or how to demo the feature by walking you through specific scenarios

Tips

In the 'Tips' documents we are sharing implementation considerations and/or best practices

 Microsoft Dynamics NAV

Learn more at <http://aka.ms/NAVGetReady>